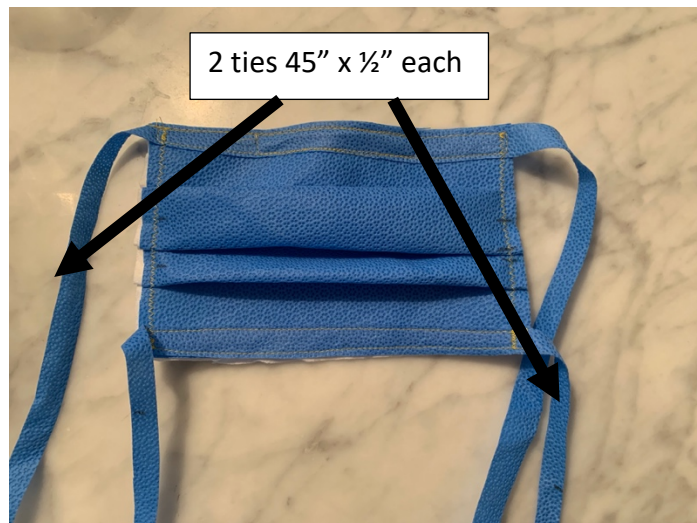


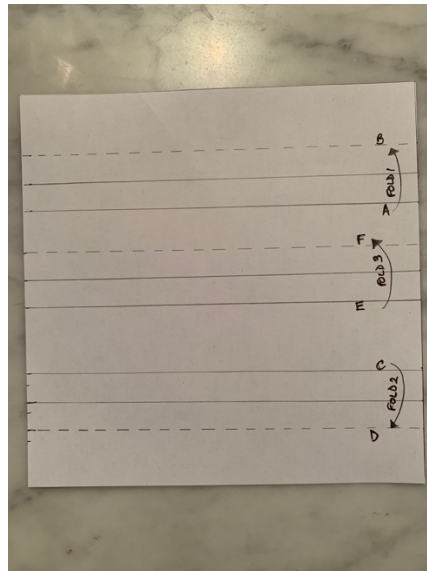
Instructions For "Valhalla" Face Mask



WARNING: the masks that are being created are not sterile and not intended to be respiratory protection. No one should use these masks to protect themselves or others from respiratory particles.

What you will need for each mask:-





Surgical fabric – blue for main fabric and white for lining.

For each mask you will need 1 piece of each fabric 7" x 7".

Ties (cut from the same blue surgical fabric)

2 pieces 45" x 1/2"

1 Paperclip, straightened and with ends bent

1 Template

How to make the mask:-

1. Use the drawing above to make a template for marking the tuck lines on blue fabric. This will help you later.
2. Place the two pieces of fabric together with **WRONG** sides facing



3. Find center of ties and pin one along bottom edge and one along top edge, matching to center of mask.



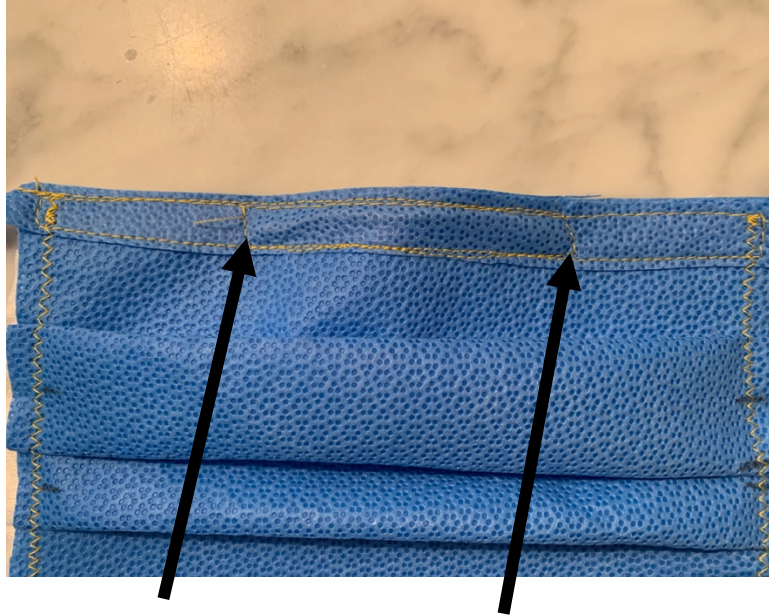
4. Stitch tie to bottom of mask.



3. At top, stitch tie along top edge.



5. Stitch along bottom edge, inserting straightened out paperclip as you reach about half way. Continue to stitch making sure your needle doesn't hit the paperclip.



6. Sew down at both ends of paperclip to hold in place.



7. Follow directions on the template to make tucks:

Fold A to B
Fold C to D
Fold E to F

8. Pin each tuck in place.

Sew down both sides making sure the tucks are secure. Use a straight stitch or zigzag stitch.

You are finished!